

DM product range

Standalone air dehumidifiers



Casing in stainless steel

High performance desiccant rotor

PTC reactivation heater to eliminate the overheating risk

High efficiency fans with EC motor

Adjustable air flow potentiometer (2M and 2T versions)

Reliability and simple maintenance



Description

The DM range of dehumidifiers is designed to meet the different needs of users in the building and industrial sectors, particularly for storage and production.

The DM works by adsorption with a high performance silicagel desiccant rotor continuously reactivated. They are made with a stainless steel single block.

They include air filter(s) (G4), fan(s) with EC motor (Electronically Commutated), an electric heater PTC to eliminate the overheating risk. The 2M and 2T versions are fitted with a control potentiometer.

Operating principle

1 fan dehumidifiers (1M)



2 fans dehumidifiers (2M et 2T)



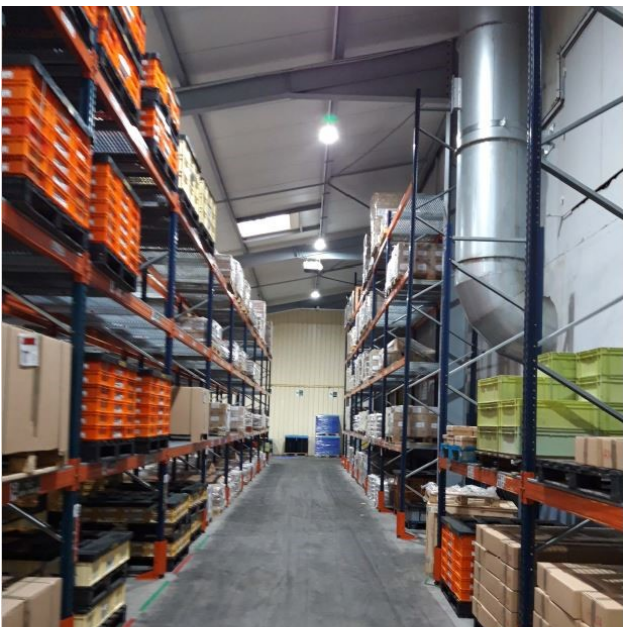
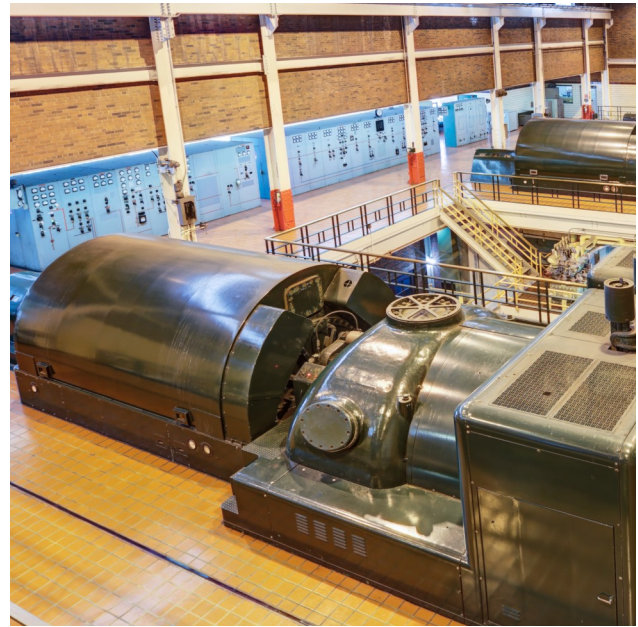
Applications

The DM range supplies dry air to all applications such as storage, utilities and buildings preservation .

They are designed to treat air or be installed in air conditioning between -20°C and $+40^{\circ}\text{C}$.

The hygrometry control makes it possible to :

- Maintain corrosion free
- Protect against condensation
- Prevent the appearance of mould
- Reduce the drying time in construction
- Preserve during storage
- Prevent moisture regain in hygroscopic materials
- Prevent clogging or caking



Selection

In addition to the adsorption air dehumidification system, DM units can be supplied with the following equipment and functions:

→ Standard

- G4 filtration
- Ammeter
- Remote control
- Handle*
- Potentiometer*
- 24V*

→ In options

- Hour meter
- PID regulation system*
- Process air connector
- 19mm insulation*
- Frame and wheels*

Accessories : Filter box(es)*, wall support,* hygostat or humidity sensor*

* available depending on the versions 1M, 2M or 2T

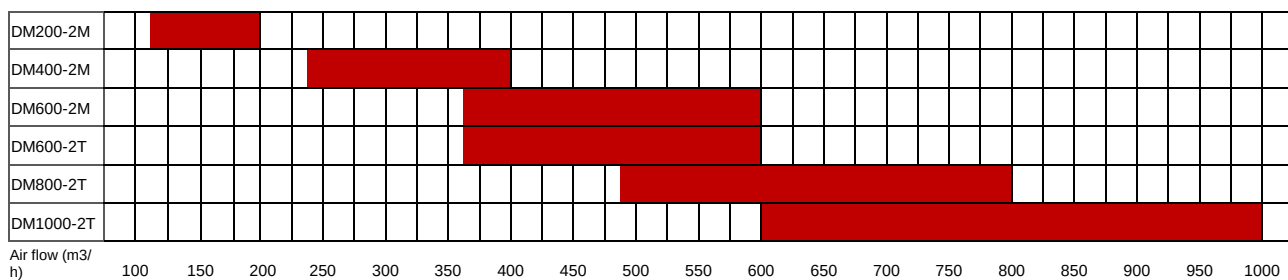
Each DM unit is equipped with an electrical cabinet.

Selection

The size of a DM unit depends mainly on the face speed of the air on the internal components, and therefore on the air flow process.

The following quick selection tables are only based on the desiccant wheel.

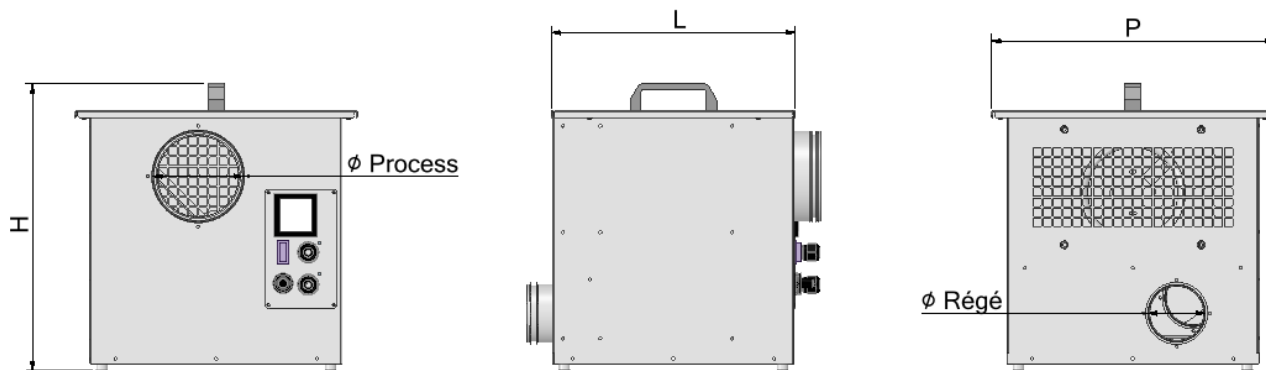
1 fan DM	Nominal air flow	Dehumidification capacity (20°C to 60% HR)	Electrical power
DM200-1M	200 m ³ /h	0,6 kg/h	0,8 kW
DM300-1M	300 m ³ /h	1,1 kg/h	1,2 kW
DM450-1M	450 m ³ /h	1,4 kg/h	1,5 kW



2 fans DM	Nominal air flow	Dehumidification capacity (20°C to 60% HR)	Electrical power
DM200-2M	200 m ³ /h	0,7 kg/h	0,9 kW
DM400-2M	400 m ³ /h	1,6 kg/h	2,1 kW
DM600-2M	600 m ³ /h	2,5 kg/h	3,2 kW
DM600-2T	600 m ³ /h	3,2 kg/h	4,5 kW
DM800-2T	800 m ³ /h	4,6 kg/h	6,5 kW
DM1000-2T	1000 m ³ /h	6,4 kg/h	9,3 kW

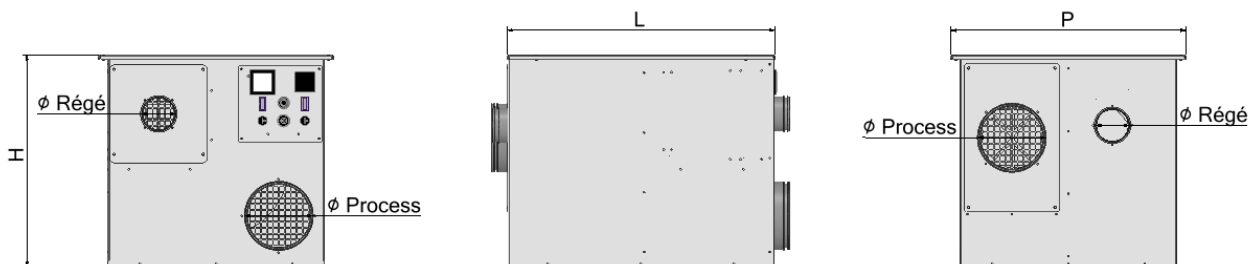
Dimensions

1 fan DM dimensions



	Length	Depth (P)	Height	Ø Process	Ø Reactivation
DM200-1M	393	340	397	125	80
DM300-1M					
DM450-1M	440	370	450	160	80

2 fans DM dimensions



	Length	Depth (P)	Height	Ø Process	Ø Reactivation
DM200-2M	490	420	430	125	80
DM400-2M	632	555	510	160	80
DM600-2M					
DM600-2T	980	755	710	250	160
DM800-2T					
DM1000-2T					

Dimensions in mm